

Mitel 7400 IP Terminals

Elevate your IP communications system

Mitel 7400 IP terminals are designed with quality and esthetics in mind, while offering full support for Mitel communications systems.

Combining Mitel's extensive experience in terminal design with thorough end-user research, these terminals deliver world-class usability and efficiency. The terminals are suitable for any office and general enterprise environment, providing optimal support for our advanced communication systems. Integrated terminal management means backing-up user configuration and telephony data is as simple as the automatic upload of new Mitel 7400 IP phone software.

Mitel 7400 IP Terminals

The Mitel 7400 IP series, with its sophisticated and ergonomic design, offers a user-friendly graphical interface for an unparalleled user experience. Total integration with Mitel call managers and the auto-provisioning feature integrated in the Mitel 7400 series contributes to a low total cost of ownership for the complete communications system. To match various customer needs, there are four different phone models in the Mitel 7400 IP series:

Mitel 7433 - an easy-to-use entry-level business IP phone, with an intuitive user-interface that includes graphical menu support.



Mitel 7434 - a flexible office terminal. This phone has a traditional flat position and a tilting display, as well as a number of programmable function keys and speed dial buttons. For additional flexibility, the phone can be supplemented with extra key panels.



Mitel 7444 - a business IP phone. It has a large tilting color display as well as a completely new GUI. Soft keys makes this phone ideal in open-concept environments.



Mitel 7446 - the most advanced version in the Mitel 7400 IP terminal series. Equipped with a large color display with touch screen support, the phone enables a new way of working. Mitel 7446 terminals have an upright position for easy display viewing and optimal touch screen display ergonomics.



KEY BENEFITS

- Delivers superior voice quality, with G.722 wideband codec and matching audio performance
- Acoustic echo cancellation₁
- Dynamic jitter buffer
- Volume control (combined for handset, headset, loudspeaker, ring tone)
- Electronic hook-switch (DHSG) for wired and wireless headsets (Mitel 7434 and Mitel 7444)
- Distinct blue LEDs for function keys and speed dial keys
- Dedicated headset port₁
- Mute function
- Equipped with hearing aid support and acoustic shock protection
- Supports increased volumes for users with impaired hearing
- My Dialog Contacts – End-user application for merging Microsoft Office Outlook® contacts with the personal contacts in the phone
- Phone administration and management integrated in system management applications
- Integrated web server for central, remote and local support

₁Applies to Mitel 7434, Mitel 7444 and Mitel 7446

SECURITY

Mitel 7400 IP terminals provide a high degree of security.

- Media and signaling encryption via TLS and SRTP
- General security authentication with RADIUS server using IEEE 802.1X
- Individual authentication (end-user passwords)
- SSH ensures security for remote system administrator access

UPGRADABLE

Software for Mitel 7400 IP terminals can be automatically updated. If needed, the phone will download the latest software from a defined web server. Automatic update ensures that the Mitel 7400 IP terminals in the system are always up to date with the latest software version.

OTHER FEATURES

- Support for user mobility, free seating: log on/off
- Personal settings available when users log on to another telephone
- Speaker for monitoring, for example, when using telephony services (call center queue, interactive voice systems, news or weather forecasts, etc.)
- Excellent hands-free operation with full-duplex and wideband voice support
- Emergency call support
- Branch office survivability support
- DNS SRV (service records)

Extra Key Panels for Mitel 7434 and 7444

There are two different extra key panel options: Key Panel Unit (KPU) and Display Panel Unit (DPU). The phones can be equipped either with up to three KPUs providing 72 extra keys, or with up to two DPUs, providing 48 extra keys.



Display Panel Unit (DPU)

Key Panel Unit (KPU)

LANGUAGES

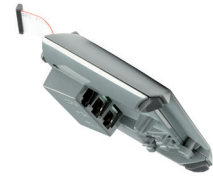
Multi-language support, pre-loaded and selectable by the end user

ACCESSORIES

- Extra key panels for Mitel 7434 and 7444
- Optional unit with built-in 2-port Gigabit Ethernet switch T/ TX and port for extra bell
- Country-dependent power adapters
- LAN cable

OPTION UNIT (OPU)

Option Unit is integrated in the foot and available for Mitel 7433, 7434 and 7444 phone versions. Following functionality is supported:



Option Unit (OPU)

- 2-port Gigabit Ethernet switch
 - 10M/100M/1000M Ethernet LAN switch (auto)
 - User priority, 1-7, (VLAN) per port (phone, PC)
 - 802.1X with or without VLAN
 - Different VLAN for phone and PC
 - Switch on/off VLAN tagging for traffic originating in the PC
 - Full duplex or half duplex (auto)
- Extra bell and busy lamp
- OPU parameter control via the phone

Supported System Versions

Telephony System	Minimum version requirements		
	7433/7433	7444	7446
MiVoice MX-ONE	3.2 SP2	4.1 SP1	3.0
TSW	SP6	SP7	SP1
BusinessPhone	9.0	9.0	8.1
MD Evolution	11.0		11.0

Technical Specifications	Mitel 7433 & 7434	Mitel 7444	Mitel 7446
REGULATORY COMPLIANCE			
Acoustic shock protection	ETS 300 245-2	ETS 300 245-2	ETS 300 245-2
Hearing aid compatibility	ITU-T P.370 (8/96) and FCC; Part 68, subpart D American	ITU-T P.370 (8/96) and FCC; Part 68, subpart D American	ITU-T P.370 (8/96) and FCC; Part 68, subpart D American
EU RoHS Directive	2011/65/EU	2011/65/EU	2011/65/EU
EMC	EN 55 022 Class B, FCC part 15	EN 55 022 Class B, FCC part 15	EN 55 022 Class B, FCC part 15
POWER			
Power over Ethernet IEEE 802.3af	Class 1, dynamic	Class 2, dynamic	Class 3
Power adapter	Input 100-240 V AC, Output 5 V DC	Input 100-240 V AC, Output 5 V DC	Input 100-240 V AC, Output 24 V DC
Average phone power consumption	10/100 Mbit/s Ethernet, 2 W	10/100 Mbit/s Ethernet, 2.9 W	10/100 Mbit/s Ethernet, 3.7 W
DPU/KPU average consumption	0.1 W / unit*	0.1 W / unit	-
Gigabit Ethernet Switch	max 2.1 W	max 2.1 W	-
Power off button	Yes*	Yes	-
Power save mode	Yes	Yes	Yes
DISPLAY			
Display type	B&W, graphical	Color, graphical	Color, graphical
Touch screen	-	-	Yes
Backlight (white)	Yes*	Yes	Yes
Tiltable	Yes*	Yes	Yes
ENVIRONMENT			
Operating temperature	+5 to +45 °C	+5 to +45 °C	+5 to +45 °C
Storage temperature	0 to +70 °C	0 to +70 °C	0 to +70 °C
Relative humidity	5 to 90 %	5 to 90 %	5 to 90 %
GENERAL SPECIFICATIONS			
Size (l x w x h)	220 x 175 x 85	220 x 185 x 85	320 x 225 x 160
Weight, material (g)	800	855	1,100
Product color	Dark grey	Dark grey	Dark grey/light grey
Supported Codecs			
Voice Codecs	G.711, G.729a, G.729ab, G.723.1	G.711, G.729a, G.729ab, G.723.1	G.711, G.729a, G.729ab, G.723.1
Wideband	G.722	G.722	G.722
PHONE BOOK			
Name length entry	24 characters	24 characters	24 characters
Number length entry	24 digits	24 digits	24 digits
Entries	1,000	1,000	1,000

Technical Specifications	Mitel 7433 & 7434	Mitel 7444	Mitel 7446
KEYS			
Line keys	3	3 (soft-keys)	3 (touch-keys)
Display navigation keys	2	2	1 (5 functions) Volume keys
Volume keys	2	2	2
Function keys with indication	5	8	7
Mute key	Yes	Yes	Yes
Speaker phone key	Yes*	Yes	Yes
Telephone settings key	Yes	Yes	Yes (touch-key)
Clear key	-	-	Yes
Clear/Reset key	Yes**	Yes	-
Clear/Reset/Off key	Yes*	Yes	-
Monitor loudspeaker key	Yes**	Yes	-
Programmable keys (indicators)	8*	8 (80 total on 10 pages)	20
Web browser key	-	-	Yes (touch-key)
Message waiting	Yes	Yes	Yes

ADDITIONAL FEATURES AND FUNCTIONS

Wall-mount	Yes	Yes	-
Different ring signals for different calling persons	Yes	Yes	Yes
Full duplex hands-free/ loudspeaker mode	Yes*	Yes	Yes
Headset mode / LED key	Yes*	Yes	Yes
Support for wireless headset DHSG standard	Yes*	Yes	-

* - Mitel 7434ip only

** - Mitel 7433ip only